



# Elkridge-Harford Hunt Pony Club Club Logo Gear Catalog

REV 2/14/24



Welcome to the club clothing catalog. It has been designed to be viewed on electronic devices.

## To order:

- Review catalog, items shown and described starting on page 2.
- Prices are subject to change. If there are any changes on items ordered, I will contact you before finalizing the order.
- Payment is due at time of order, Venmo (@EHHPC) or check (by mail) (if using Venmo, please email or text me a copy of your payment receipt)
- Make checks payable to EHHPC
- Deliver by mail or in person to:
  - Maggie Berman  
15015 Jarrettsville Pike  
Monkton, MD 21111  
[maggiemberman@gmail.com](mailto:maggiemberman@gmail.com)  
410-375-7710 (mobile)

Orders can be placed at any time. They will be submitted to Sunshine Designs once a month, after the Sponsor's meeting date. Orders and payment can be mailed to me or brought to the Sponsor's meeting.



# Elkridge-Harford Hunt Pony Club Club Logo Gear Catalog

REV 2/14/24



## Women's Color Blocked Wicking Polo

Charles River Apparel

Item # 2810

100% polyester piqué knit (8.11 oz/lyd/165 gsm) made exclusively with TopShield™ moisture management treatment. This hi-tech treatment applied to the fabric wicks moisture away from your body, leaving you feeling comfortable and dry. Also features an anti-microbial treatment that inhibits the growth of odor-causing bacteria.

- Color blocked accents at sides for a flattering appearance.
- Rib knit collar accented with white tipping.
- Taped neckline for clean, finished appearance and tagless neck label for comfort.
- Side-seam vents.
- Dyed-to-match 5-button placket.
- Features a set-in sleeve design and fitted styling.

Size: XS, S, M, L, XL      \$42.00

Size: 2XL      \$44.00



## Men's Color Blocked Wicking Polo

Charles River Apparel

Item # 3810

100% polyester piqué knit (8.11 oz/lyd/165 gsm) made exclusively with TopShield™ moisture management treatment. This hi-tech treatment applied to the fabric wicks moisture away from your body, leaving you feeling comfortable and dry. Also features an anti-microbial treatment that inhibits the growth of odor-causing bacteria.

- Color blocked accents at sides for a flattering appearance.
- Rib knit collar accented with white tipping.
- Taped neckline for clean, finished appearance and tagless neck label for comfort.
- Dyed-to-match 2-button placket.
- Features a raglan sleeve design for wide range of motion.

Size: XS, S, M, L, XL      \$42.00

Size: 2XL      \$44.00





# Elkridge-Harford Hunt Pony Club Club Logo Gear Catalog

REV 2/14/24



## Gildan Adult 6.0 oz. DryBlend™ 50/50 Jersey Polo

Item # G880

- 50% preshrunk cotton, 50% polyester
- DryBlend® fabric wicks moisture away from the body
- Welt-knit collar and cuffs
- Woodtone buttons
- Double-needle stitched hemmed bottom
- Two-button placket

Size: S, M, L, XL           \$26.00

Size: 2XL                   \$28.00



## Classic Rugby Shirt, 8.85 oz

Charles River Apparel

Item # 9278

- 100% Cotton Jersey Knit (8.85 oz./yd2)
- Classic styling with a 4" yarn-dyed rugby stripe
- Fabric is treated so that it instantly feels soft and broken-in
- Heavy-duty white twill placket conceals rubber buttons
- Reinforced stitching throughout

Size: XXS, XS, S, M, L, XL       \$68.00

Size: 2XL                   \$71.00



## Sport Tek Rugby Shirt, 6.5 oz

Item # ST301

- 6.5-ounce, 100% ring spun cotton jersey
- Engineered with yarn-dyed stripes
- Woven twill collar
- Twill-taped neck
- 2-button twill-reinforced placket with rubber buttons
- 1x1 rib knit cuffs

Size: XS, S, M, L, XL           \$40.50

Size: 2XL                   \$43.00





# Elkridge-Harford Hunt Pony Club Club Logo Gear Catalog

REV 2/14/24



## Adult Flannel Pants

Item # FLNP

- 4.7 oz flannel double brushed for comfort
- adjustable waistband with twill tie
- side pockets
- inside locker loop
- relaxed fit
- 100% cotton
- Adult XS is equivalent to Youth L



Size: XS, S, M, L, XL                    \$40.00

Size: 2XL                                        \$42.00

## Holloway Ladies Repreve Eco Jacket

Item # 229716

- 100% polyester MicroTec woven face
- Made from Repreve® 50% recycled polyester fill quilting for lightweight warmth
- Water-resistant
- Half-elastic cuffs
- Front antique nickel zipper and storm flap
- Front-zippered pockets
- Droptail
- Holloway logo on bottom right
- made in China
- Color: Black with large EHHPC logo on the back; can have a name added to the front

| Garment Measurements - in |    |        |        |        |        |        |
|---------------------------|----|--------|--------|--------|--------|--------|
| Size                      | XS | S      | M      | L      | XL     | 2XL    |
| Chest - Circumference     | 38 | 40     | 42     | 45     | 48 1/2 | 52 1/2 |
| Body Length - HPS         | 25 | 25 3/4 | 26 1/2 | 27 1/4 | 28     | 28 3/4 |
| Sleeve Length - CBN       | 31 | 31 3/4 | 32 1/2 | 33     | 33 1/2 | 34     |

Size: XS, S, M, L, XL                    \$151.00

Size: 2XL                                        \$153.00





# Elkridge-Harford Hunt Pony Club Club Logo Gear Catalog

REV 2/14/24



## Badger Ladies Mesh/Tricot Short

Item # 7216

- 100% Polyester, 70 denier mesh with solid tricot liner
- Athletic cut
- Superior fit
- Covered elastic waistband and drawcord
- 5" inseam

Size: XS, S, M, L, XL      \$25.50

Size: 2XL                      \$29.50



## Badger Ladies Core Short

Item # 4116

- 100% polyester moisture management/antimicrobial performance fabric
- 5" Inseam
- Double-needle hem
- 1.5" Covered elastic and drawcord
- Badger heat seal logo on left hip

Size: XS, S, M, L, XL      \$26.00

Size: 2XL                      \$30.00



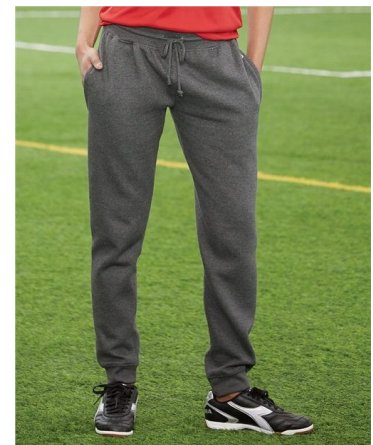
## Badger Ladies Fleece Jogger

Item # 1216

- 9.5 oz. Ringspun 60% cotton/40% polyester
- Covered elastic waistband
- Outside drawcord
- Two deep side pockets
- Tapered fit in lower leg, Reinforced spandex rib knit cuffs
- Embroidered Badger logo on left hip
- Colors: Black, Charcoal, Oxford

Size: XS, S, M, L, XL      \$37.00

Size: 2XL                      \$39.00





# Elkridge-Harford Hunt Pony Club Club Logo Gear Catalog

REV 2/14/24



## Gildan Adult 50/50 DryBlend™ Long-Sleeve T-Shirt

Item # 8400

DryBlend fabric for that fresh look and feel all day.

### Key Features:

- preshrunk 5.6-oz 50% cotton/50% dryblend polyester jersey
- Label type may vary as sewn-in labeling is transitioning to tagless heat-seal labeling
- moisture-wicking fabric
- double-needle 7/8" collar
- taped neck and shoulders
- rib-knit cuffs

Size: S, M, L, XL           \$22.00

Size: 2XL                   \$24.00



## Gildan - DryBlend™ Crewneck Sweatshirt

Item # 12000

- 9.3-ounce, 50 cotton/50 DryBlend poly
- Double-needle stitching
- Set-in sleeves
- 1x1 rib knit with spandex in neck, cuffs and waistband
- No-pill Air jet Yarn Moisture-wicking properties

Size: S, M, L, XL           \$29.00

Size: 2XL                   \$33.00



## Gildan Adult Heavy Blend Hooded Sweatshirt

Item # 18500

- 8-ounce, 50/50 cotton/poly
- Double-needle stitching at waistband and cuffs
- Double-lined hood with dyed-to-match drawcord
- 1x1 rib knit cuffs and waistband with spandex
- Front pouch pocket

Size: S, M, L, XL           \$34.00

Size: 2XL                   \$38.00





# Elkridge-Harford Hunt Pony Club Club Logo Gear Catalog

REV 2/14/24



## UltraClub® Adult Rugged Wear Thermal-Lined Full-Zip Jacket

Item # 8463

### Key Features:

- 80% cotton/20% polyester fleece shell (9-oz.)
- warm thermal lining (6-oz.) in body and sleeves
- jersey-lined hood

Size: S, M, L, XL           \$66.00

Size: 2XL                   \$70.00



## Ladies Full Zip Fleece Jacket

Blue Generation

Item # BG6951

- 100% polyester
- Blue Generation `s Polar Face 9.6 oz.
- Anti pill polar fleece
- Ladies fitted style
- Welt Pockets
- Taped collar, cuff & waistband with elastic
- Matching color front zipper
- No Drawstring

Size: S, M, L, XL           \$42.00

Size: 2XL                   \$48.00



## Adult Fleece Vest

Port Authority

Item # F219

- 8.3-ounce, 100% polyester
- Twill-taped neck
- Reverse coil zipper
- Chin guard
- Bungee cord zipper pulls
- Tricot-lined armholes
- Front zippered pockets
- Open hem with drawcord and toggles for adjustability

Size: S, M, L, XL           \$36.00

Size: 2XL                   \$38.00





# Elkridge-Harford Hunt Pony Club Club Logo Gear Catalog

REV 2/14/24



## Portsmouth Jacket

Charles River Apparel

Item # 9720

- Wind & water-resistant Softex Polyester with oxford grey jersey lining.
- Hooded full zip design.
- Reflective, easy grab zipper pulls.
- Covered zippered side pockets & elasticized cuffs.
- Open hem with shockcord drawstring.

Size: S, M, L, XL           \$58.00

Size: 2XL                   \$60.00



## Womens New Englander Rain Jacket

Charles River Apparel

Item # 5099

- 100% Polyester Polyurethane (3.98 oz./yd2)
- Wind & waterproof with heat-sealed seams for weather protection
- Lined with grey mesh in body & front yoke and underarm vents to allow for air-flow circulation
- 2-way zipper for freedom of movement and full length windflap for protection from the elements
- 3M™ Reflective trims across front & back provide high visibility

Size: XS, S, M, L, XL       \$65.00

Size: 2XL                   \$68.00



This item is available in Mens and Youth versions as well.





# Elkridge-Harford Hunt Pony Club Club Logo Gear Catalog

REV 2/14/24



## Gildan Youth 5.6 oz. DryBlend™ 50/50 Jersey Polo

Item # G880B      \$21.00

- 50% preshrunk cotton, 50% polyester
- DryBlend® fabric wicks moisture away from the body
- Welt-knit collar and cuffs
- Woodtone buttons
- Double-needle stitched hemmed bottom
- Two-button placket

Youth Size: S, M, L, XL



## Sport-Tek Youth Posicharge RacerMesh Polo

Item # YST640      \$25.00

- 3.8-ounce, 100% polyester flat back mesh with PosiCharge technology
- Moisture-wicking
- Flat knit collar
- Taped neck
- 3-button placket with dyed-to-match buttons
- Set-in, open hem sleeves

Youth Size: XS, S, M, L, XL



## Youth Flannel Pants

Item # YFLNP      \$40.00

- 4.7 oz flannel double brushed for comfort
- side pockets
- inside locker loop
- relaxed fit
- no twill tie on youth
- 100% cotton
- Adult XS is equivalent to Youth L

Youth Size: S, M, L





# Elkridge-Harford Hunt Pony Club Club Logo Gear Catalog

REV 2/14/24



## Badger Youth Mesh/Tricot Short

Item # 2207      \$21.00

- 100% Polyester, 70 denier mesh with solid tricot liner
- Athletic cut
- Superior fit
- Covered elastic waistband and drawcord
- 6" inseam

Youth Size: S, M, L



## Badger Girls B-Core Short

Item # 2116      \$23.00

- 100% polyester moisture management/antimicrobial performance fabric
- 4" Inseam
- Double-needle hem
- 1.5" Covered elastic and drawcord
- Badger heat seal logo on left hip

Youth Size: XS, S, M, L



## Badger Youth B-Tech Tee

Item # 2820      \$25.00

- 94% Polyester, 6% Spandex
- Moisture management/antimicrobial performance fabric
- Soft cotton-like feel for comfort
- Double-needle hem with tack
- Badger sport paneled shoulder for maximum movement
- Badger heat seal logo on left sleeve

Youth Size: S, M, L





# Elkridge-Harford Hunt Pony Club Club Logo Gear Catalog

REV 2/14/24



## Gildan Youth Pullover Hooded Sweatshirt

Item # 18500B      \$32.00

- 8-ounce, 50/50 cotton/poly low-pill Air Jet Spun Yarn
- Classic fit
- Air jet yarn for softer feel and reduced pilling
- Grey pearlized tear away label
- Double-lined hood without drawcord for safety
- Double-needle stitching at shoulders, armholes, neck, waistband and cuffs
- Front pouch pocket



Youth Size: XS, S, M, L, XL

## Jerzees NuBlend® Youth Full-Zip Hooded Sweatshirt

Item # 993B      \$38.00

- 8-ounce 50/50 cotton/poly NuBlend® preshrunk pill-resistant fleece
- High stitch density for a smooth printing canvas
- Single-ply hood
- Seamless body with set-in sleeves
- 1x1 rib knit cuffs and waistband
- Coverseamed neck, armholes and waistband
- Front pouch pockets



Youth Size: S, M, L, XL

## Jerzees NuBlend® Youth Crewneck Sweatshirt

Item # 562B      \$22.50

- 8-ounce 50/50 cotton/poly NuBlend® preshrunk pill-resistant fleece
- High stitch density for a smooth printing canvas
- Seamless body with set-in sleeves
- Two-needle coverstitching on collar, armhole and waistband
- 1 x 1 ribbed collar, cuffs and waistband with spandex for stretch and recovery
- Concealed seam on cuffs



Youth Size: S, M, L, XL



# Elkridge-Harford Hunt Pony Club Club Logo Gear Catalog

REV 2/14/24



## Youth Adirondack Fleece Pullover

Charles River Apparel

Item # 8501      \$52.00

- Plush and anti-pill Loftex™ Fleece (14.75 oz/lyd/300 gsm).
- Quarter zip design with black coil zippers accented with silver zipper heads.
- Stand-up collar with black accent inside.
- Zippered side pockets & elasticized cuffs.
- Open hem.

Youth Size: S, M, L, XL



## Youth Portsmouth Jacket

Charles River Apparel

Item # 8720      \$53.00

- Wind & water-resistant Softex Polyester with oxford grey jersey lining.
- Hooded full zip design.
- Reflective, easy grab zipper pulls.
- Covered zippered side pockets & elasticized cuffs.
- Open hem with shockcord drawstring.

Youth Size: S, M, L, XL



## Liberty Bags Large Drawstring Backpack

Item # 8882      \$17.00

- 210-denier nylon
- Durable construction
- Color-matched drawstring
- 17"W x 20"H





# Elkridge-Harford Hunt Pony Club Club Logo Gear Catalog

REV 2/14/24



## Liberty Bags P & O Cruiser Tote

Item # 7002                      \$17.00

- 600-denier polyester
- Contains 50% recycled polyester
- Two self-fabric handles
- Open front pocket
- Gusseted bottom
- 19"W x 12"H x 4 1/2"D



## Adams Cotton Pigment-Dyed Unconstructed Classic Optimum Cap

Item # AD969                      \$18.00

### Key Features:

- 100% cotton
- pigment-dyed
- garment-washed
- Cool-Crown™ mesh lining
- unconstructed
- low-profile
- 6-panel



### Colors available:

Apple, Aqua, Baby Blue, Black, Burgundy, Cactus, Caribbean Blue, Chamois, Charcoal, Dusk, Espresso, Forest Green, Khaki, Lemon, Lime, Midnight Blue, Mississippi Mud, Mulberry, Mustard, Nautical Red, Navy, Olive, Pale Pink, Periwinkle, Poppy, Purple, Raspberry, Royal, Sea Foam, Spruce, Stone, Tangerine, Teal, Terra Cotta, White, Wild Plum

Size: One Size Fits Most

Available in forest green for club color, but you may choose a color that better suits if you prefer!

## Saddle Pads

Logo Only                              \$13.00

Logo + Name                            \$17.00

Saddle Pads can be embroidered upon request, but **you** must provide the pad at the time of order.

